A large, abstract graphic on the left side of the page. It features several overlapping shapes in various shades of blue, including a large semi-circle at the top left, a vertical bar, and a large 'U' shape at the bottom. Two light grey circles are placed within the blue shapes. A white dotted pattern is visible in the bottom left corner of the graphic area.

**Customer API's
Endpoints catalogue**

Introduction

Purpose of document:

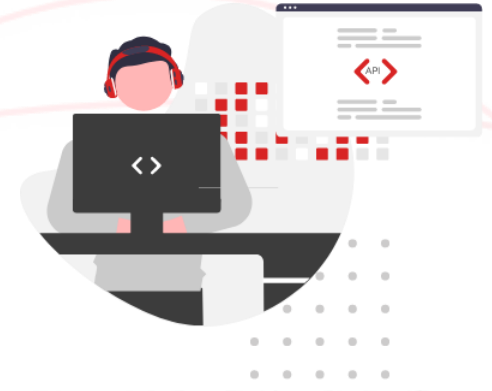
- To provide an overview of the endpoints available under the Customer API initiative
- To highlight the added value of these endpoints

Content:

- GET APIs
 - Master Data
 - Transactional Data
 - Reference Data
 - Documents
- POST APIs
 - Standard Orders
 - Consignment Fill-up Orders
 - Railcar Consumption Orders
- PATCH APIs
 - Change Order
 - Cancel Order



API's – How to leverage them in the OTC Process ?



WebHook event subscription



- GET**
- Account Listing
 - Delivery Locations
 - Delivery Location Details
 - Product Catalogs
 - Account Partners
 - Delivery Date Range
 - Optimum Size
 - Order Guidelines
 - Consignment Inventory
 - Contract List

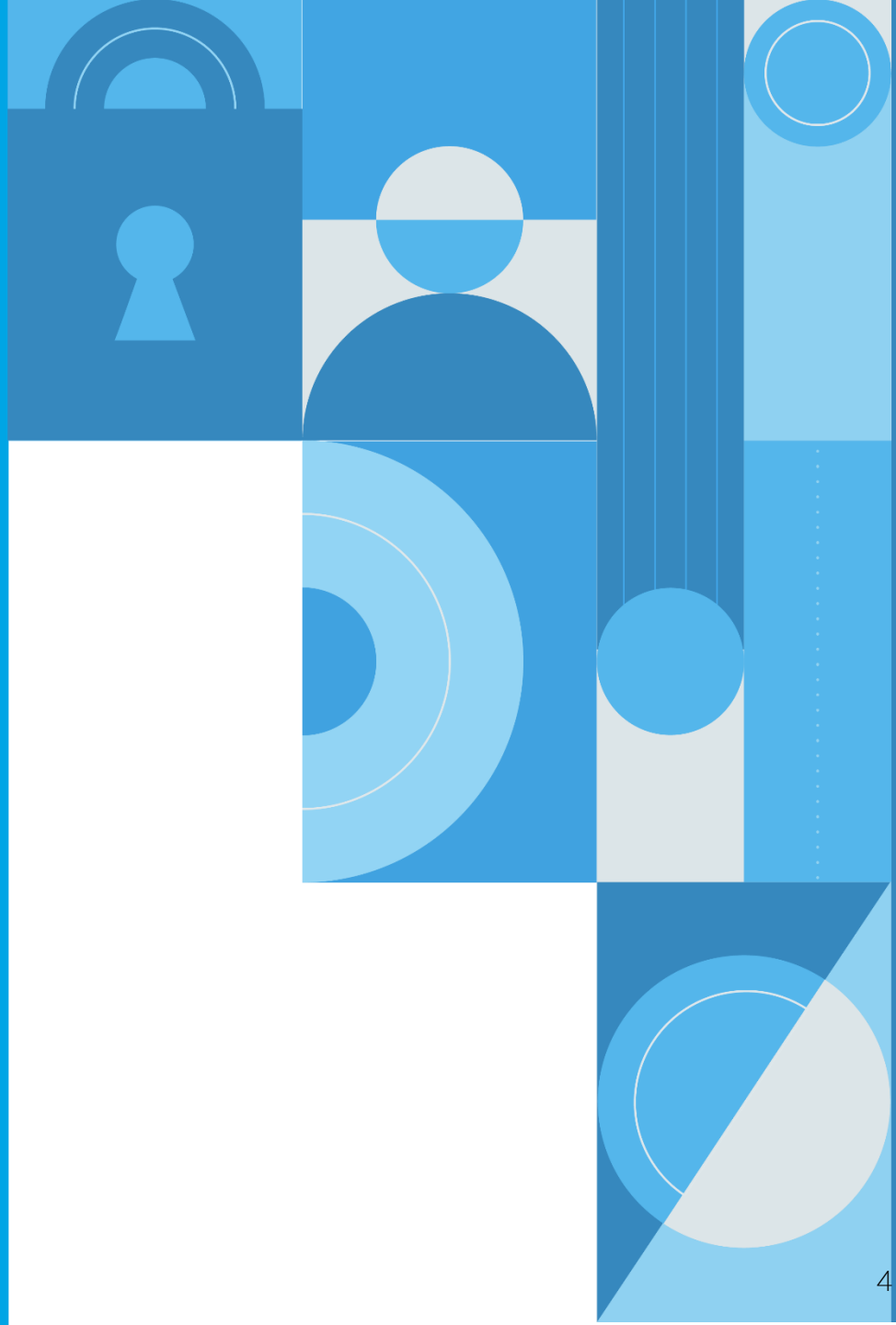
- POST**
- Standard Orders
 - Orders from Reference
 - Consignment Fill-Up
 - Railcar Consumption
- GET**
- Order Details
 - Order Listing
- PATCH**
- Order Changes
 - Order Cancellation

- GET**
- Shipment Details
 - Shipment Tracking Status

- GET**
- Invoice Details
 - Account Invoice List

- GET**
- Available Documents
 - Document Download

GET API's



GET API's list

GET APIs allow users to retrieve data from a recourse by sending a request

Transactional Data

- Shipment Details
- Shipment Tracking Status
- Account Invoice List
- Invoice Details
- Order Listing
- Order Reference List
- Orders Details
- Delivery Date Range

Reference data

- Optimum Order Size
- Order Guidelines

Documents

- Available Documents
- Document Download

Master Data

- Accounts listing
- Accounts Partners
- Product Catalogs
- Delivery Locations
- Delivery Location Details



GET API's

Transactional Data - Orders

Orders listing

- This endpoint provides a listing of the sales orders in the system by account Id, with location, PO and date filtering options.

Orders details

- This endpoint provides detailed information about individual Sales Orders and includes general order information, detailed item description, payment term information, order status and order partner information.

Orders reference list (Asia / MEAF)

- This endpoint provides the list of all contract or quotations for order reference, by location Id.

Delivery date Range

- This endpoint provides order schedule range, including minimum/maximum values for standard delivery dates.



GET API

Transactional Data – Shipment & Invoices

Shipment Details

- Prior to shipment, this endpoint provides general information on the shipment, including loading site details.
- Post-shipment, this endpoint displays detailed item information of loaded quantity, materials, batches, plant and shipment details.

Shipment tracking status

- This endpoint provides detailed information about the shipment, specific per transportation mode.

Account invoice list

- This endpoint provides the list of the commercial invoices, based on Account Id.

Invoice details

- This endpoint provides detailed information about individual commercial invoices.



GET API

Master Data

Accounts listing

- This endpoint provides the listing of the account numbers within scope of the API credential entitlement.

Accounts partners

- This endpoint displays account and contact partners for an account. List of partners include payer, bill-to, consignee, notify party, document dispatch, document email-to.

Product catalogs

- This endpoint provides the list of the ExxonMobil products associated with a delivery location, with associated affiliate and delivery method.

Delivery locations

- This endpoint provides the list of the customer delivery locations by account.

Delivery locations details

- This endpoint provides additional delivery address logistics details, related ports or depots for marine orders, and affiliate specific data including default incoterms.



GET API

Documents

Get Documents

- This endpoints allows to see the documents associated with a sales order
 - Order confirmation
 - Advance Shipping Notice
 - Bill of Lading
 - Certificate of Analysis
 - Standard Invoice

Documents download

- This endpoint allows to download the documents associated with an order, directly in PDF format.



GET API

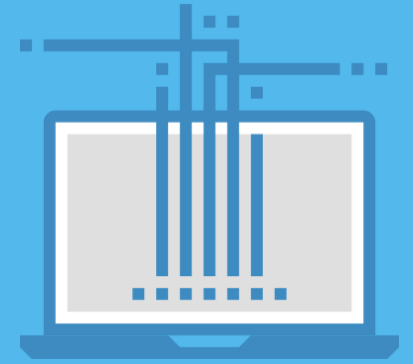
Reference Data

Optimum Order size

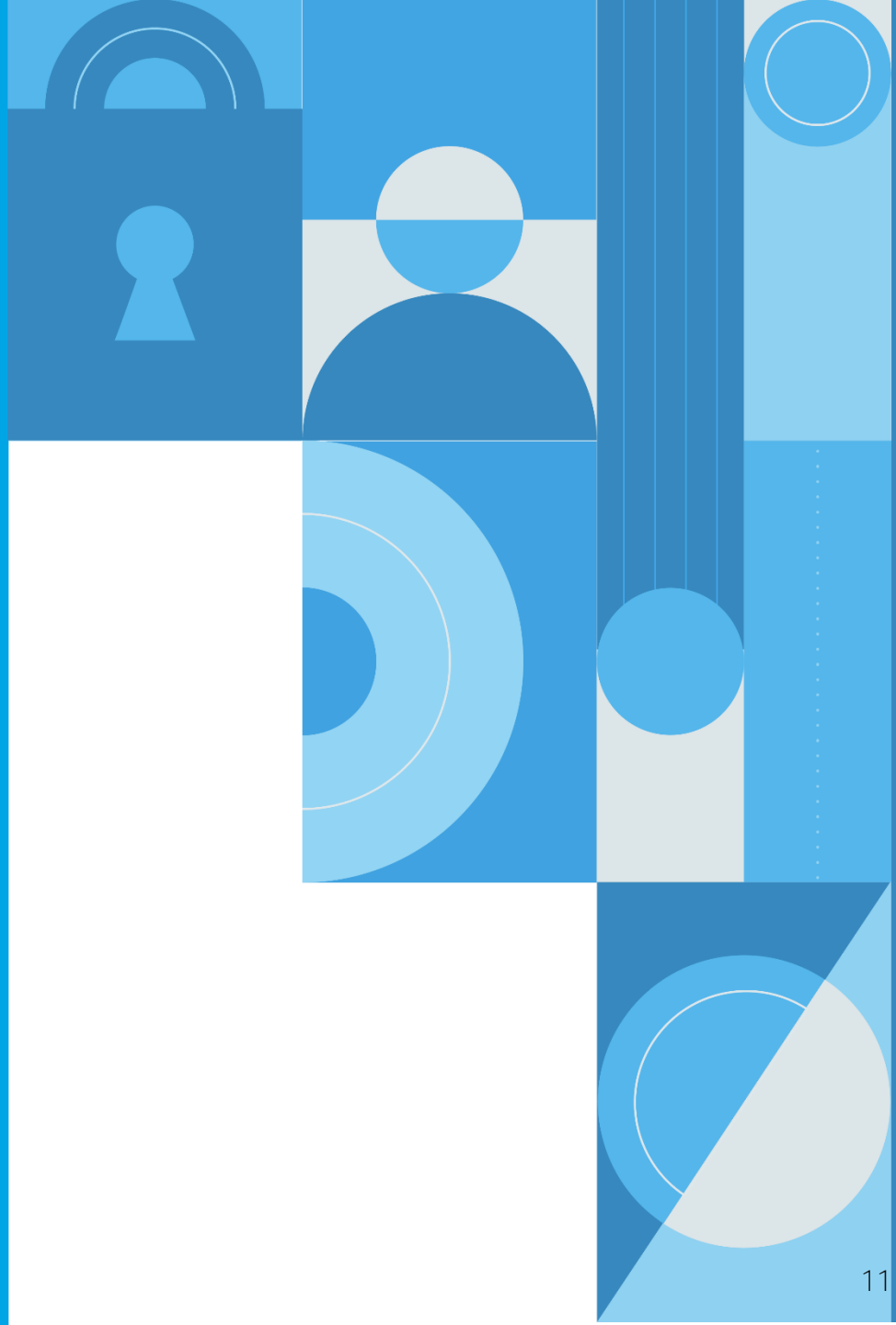
- This endpoint provides sales order guidelines on optimum size (not applicable for CPU shipments).

Order Guidelines

- This endpoint provides guideline indicators and data related to special services and exceptions that may be requested at order placement for certain modes.



POST API's



POST API's list

POST APIs allow users to send data to a server to create a sales order

Create Order:

- Standard Orders
- Consignment Fill-up Orders
- Orders from a reference (Asia / MEAF)
- Railcar Consumption (US)



POST APIs

Create Standard Orders

- This endpoint enables users to create a Sales Order for eligible order types
- Shipping modes are Truck / Railcar / Marine Containers orders.
- Marine orders with specific partner selection, specified port and ICD selections for marine destination

Create Consignment fill-up order

- This endpoints allows to trigger a Fill-up order to an existing Consignment Inventory.

Create Orders from reference (Asia / MEAF)

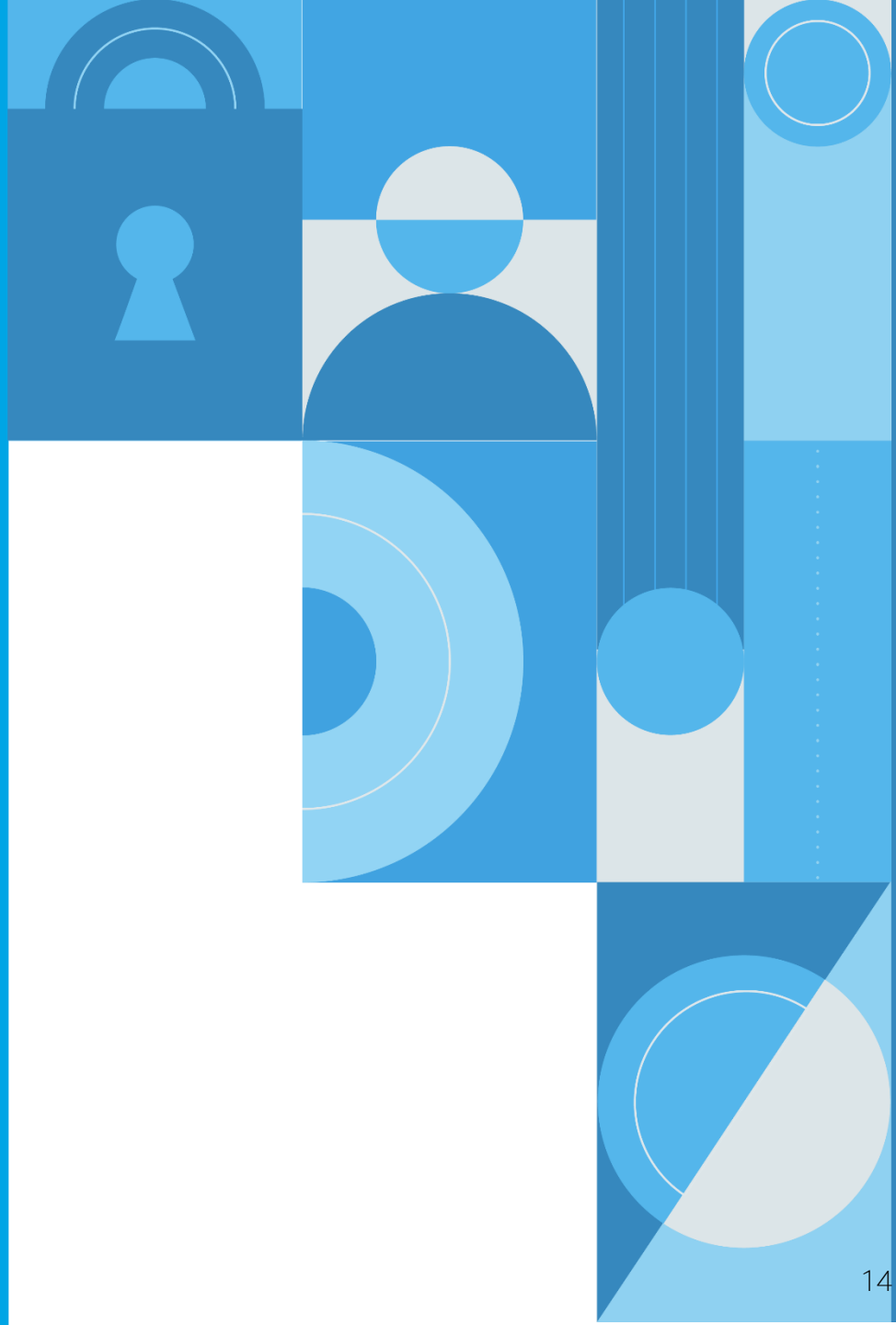
- This endpoints allows to create an order referring to a contract or quotation reference.

Railcar consumption (US)

- This endpoints allows to report and submit the consumption (“Tap”) from a railcar.



PATCH API's



PATCH API

PATCH allows modification or cancellation of an order

Change Sales Order

- This endpoint enables user to modify in an existing sales order: the PO #, the requested delivery date and the marine partners (as long as the order status is not "Shipment planned").

Cancel Order

- This endpoint enables users to cancel a sales order, as long as the status of the order has not moved to 'Confirmed'

